



## **Skagit Land Trust's Annual Report 2007**

April 1, 2006 - March 31, 2007

## **Board of Directors 2006 - 07**

*President* • Marlene Moore  
*Vice-President* • Patsy Martin  
*Secretary* • Jerry Haegele  
*Treasurer* • David Hall  
Bob Apter  
Glenn Bordner  
Bob Boudinot  
Ron Feld  
Ralph Heft  
Mark Hitchcock  
Rusty Kuntze  
Janice Martin  
John Milnor  
urtis A. Miller  
John Osborn  
Pat Sneeringer  
Ray Taipale  
Keith Wiggers  
Andrea Xaver

## **Advisory Council**

Paul Calver  
Harold Christenson  
Jim Ford  
Jay Ham  
Jan Hersey  
Lee Mann  
Carl Molesworth  
Diane Morton  
Gene Murphy  
Jeff Muse  
Dave Scott  
Terry Stevens  
Kate Szurek  
Ken Willis

## **Staff**

Molly Doran  
*Executive Director*  
  
Martha Bray  
*Conservation Director*  
  
Michael Kirshenbaum  
*Stewardship Director*  
  
Brenda Cunningham  
(retired 2007)  
  
Jane Zillig  
*Land Specialist*  
  
Renata Hoyle Maybruck  
*Development &  
Communications Director*  
  
Diane Bednarz  
*Administrative Assistant*  
  
General Counsel  
Bradford E. Furlong P.S.

Managing Editor: Diane Bednarz  
Editor: Molly Doran

*Skagit Land Trust*  
*PO Box 1017*  
*425 Pine Street*  
*Mount Vernon, WA 98273*  
*360-428-7878*  
*[www.skagitlandtrust.org](http://www.skagitlandtrust.org)*

Cover PhotosCredits:  
Trust staff &  
Andrew Cline (bottom left)

## **Lands Protected This Year**

5.1	miles of shoreline and salmon habitat along the Skagit River and tributaries.
265	acres of Anacortes Community Forest Lands.
82	acres of tidelands.
471	acres of forested floodplain and wildlife habitat.
13	acres of lake and wetlands.

## *From the President & Executive Director*

### **Dear Members and Supporters,**

Skagit Land Trust (SLT) is working to protect the natural environment of Skagit County—its spectacular landscapes, natural processes, flowing rivers, forests, diversity of plants and animals, rich agricultural areas and places of beauty and solitude. Our vision of the region a hundred years from now is of a landscape still characterized by vast open spaces and dominated by nature; of healthy natural systems with habitat for native plants and animals; and of thriving human communities whose inhabitants are stewards of the region's natural resources and beauty.



This is a big job. Skagit County has some of the most significant wildlife habitat left in Western Washington. It has one of the most fertile and functioning agricultural bases. Skagit forest lands are relatively intact. Yet Skagit County is also located in one of the fastest growing regions of the United States. Thus we approach our work with humility and speed, seeking collaborative, balanced and common sense protection solutions to Skagit's major conservation threats. Rather than get mired in pessimism about the threats, we roll up our sleeves and seek opportunities.

The Trust has accomplished much and you, our members, are a huge part of this success. Thus we offer our annual report for 2007 to you as a collective report of what we as a team have accomplished this past year. We hope you will find something to get excited about in these

pages – and most certainly we hope you feel proud of what you have helped to accomplish.

Our members are our most important supporters, both financially, as volunteers and as a touch stone for what's important. Later this fall we will be making decisions about the Trust's next five years during a strategic planning retreat. We would like your input. Contact us either in writing, with a visit or phone call. Tell us what you think are the most pressing issues facing this county and what role you think Skagit Land Trust can play in addressing them. We want to hear what you perceive are the long-term trends that will affect our work of conservation. And finally, we want your honest opinion about our work to date—where have we been most helpful; where can we improve. Molly's direct email is [trustmd@fidalgo.net](mailto:trustmd@fidalgo.net) and phone is 360-428-7878. We both welcome your comments.

Land conservation is work we do as a community and we thank you for your help. All of us pitching in together are making a real difference in the quality of life our children and grandchildren will enjoy here in Skagit County.



# Stewardship



*Campbell Lake*



## Stewardship Highlights



From getting dirty planting thousands of trees and shrubs to beaming live images of nesting herons onto the internet, 2006-7 was a varied and busy year for Skagit Land Trust's Stewardship program. Native plant restoration activities occurred on numerous SLT properties – including Cumberland Creek, Kosbab Slough, and Barney Lake – enhancing habitat for salmon or other important species. Volunteer support for stewardship activities reached a new high, with our Americorps Volunteer Coordinator scheduling many field events. And SLT made strides towards using our protected properties to tell the story of land conservation by moving forward on a number of interpretive projects, including the new Hurn Field elk viewing pullout on SR 20, built in partnership with WA Fish and Wildlife.

Thank you Brian Bluhm - Americorps Intern 2007.



John Scurlock

*Hurn Field*

## Thank You



### Land Stewards

Scott Andrews  
Lloyd Brown  
John Day  
John Freeman  
Ed & Carolyn Gastellum  
Steven Hinton  
Apyrl Hurley  
Jim Johnson  
Nan Laney & Ned Currence  
Robin LaRue  
Tim Manns & Brenda  
Cunningham  
Dick Raisler  
LaVerne Scheltens  
Carolyn Sutton  
Richard Treston



### Thank you volunteers

Volunteers are the backbone of our Stewardship Program. In the past year the Trust enjoyed over 200 volunteers working on 25 stewardship projects and donating more than 600 hours of time. Office and administrative volunteers helped with our Swan Gala, Trust events, Trust leadership, mailings, adding another 500 hours. A full shovel salute to our volunteers!



*Hurn Field Fencing Team*

## Conservation Highlights



### **Mud Lake**

#### **Conservation Area grows:**

Skagit Land Trust purchased another 13 acres of wetlands to increase the biologically diverse Mud Lake Conservation Area in Clear Lake to 60 acres. The Leadership Skagit History team worked diligently through the winter to raise funds, design and construct a beautiful interpretive sign at Mud Lake.

### **Anacortes Community Forest Lands:**

285 acres of preservation agreements were added on the Anacortes Community Forest Lands in our partnership with the citizen's group Friends of the Forest and with the City of Anacortes. We just reached 1500 acres of community forest lands protected eleven years ahead of schedule!



*John Tursi; A friend to the Forest Lands and the Trust has protected 375 acres of ACFL easements.*



*Phil Green*

### **South Fidalgo Bay:**

A unique partnership between Skagit Land Trust, the DNR and the Texaco Trustees Restoration Committee successfully purchased and preserved another 82 acres of tidelands in Fidalgo Bay. The total protected area in the southern part of the bay is now 532 acres. The tidelands are owned by DNR with a conservation easement held by Skagit Land Trust. The tidelands contain important eelgrass beds and intertidal habitats that support many species of marine organisms and forage fish as well as over-wintering waterfowl such as Black Brant.

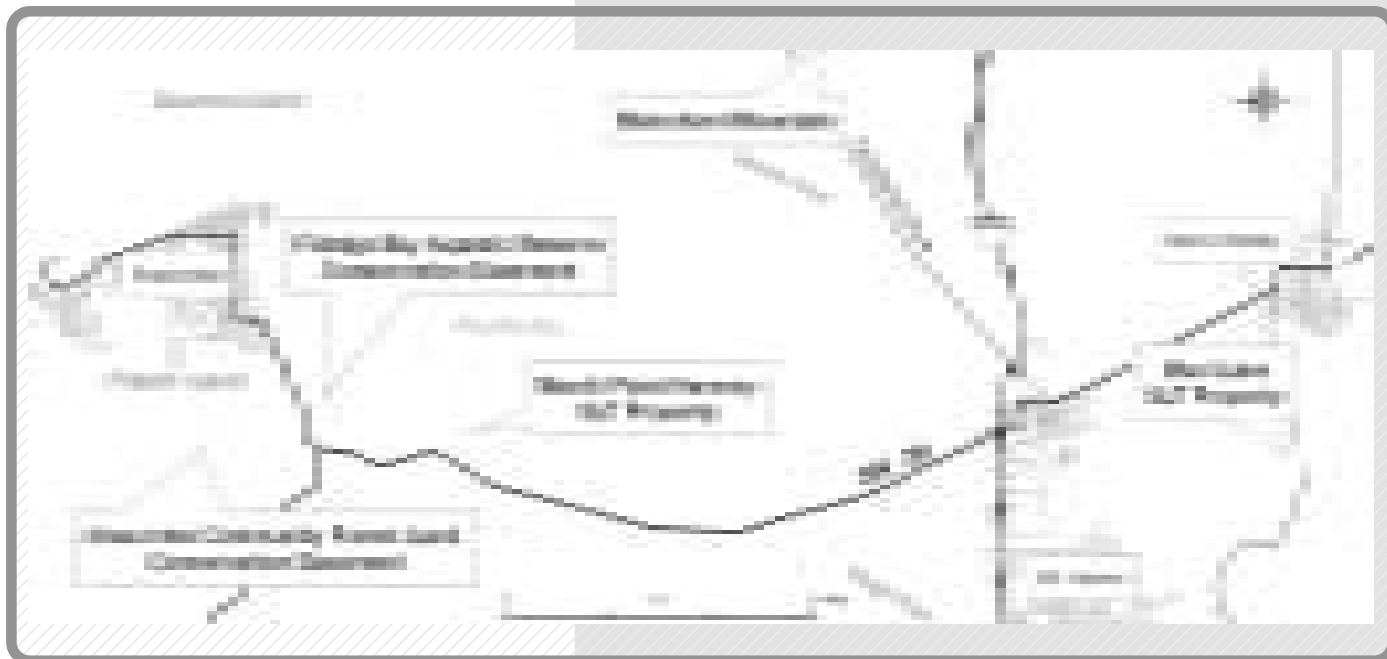


## Blanchard Mountain:

Skagit Land Trust was a member in the Blanchard Strategies Group (BSG). The BSG agreement will preserve 1600 acres of the top and west side of Blanchard Mountain as a natural forest “core”. The agreement also recommends purchasing in-holdings surrounding Blanchard. This group spawned many future-looking projects to help protect the forests in the Skagit.



*One of Blanchard's many wetlands.*



### March's Point Heronry:

We continued The Eye of the Heronry – a virtual camera in the heronry that transmits video in real time to the Research Reserve at Padilla Bay. This project was initiated by a 2006 Leadership Skagit team. Thanks to a grant from the Skagit Marine Resources Commission real time footage is accessible by linking to our website March through July ([www.skagitlandtrust.org](http://www.skagitlandtrust.org)).



*Phil Green*

## Middle & Upper Skagit



*SLT = Skagit Land Trust*



### **Elysum Meadows:**

A partnership between the Trust and landowners Ger van den Engh and Barbara Trask resulted in 110 acres and 1.5 miles of river shoreline being protected. This beautiful ranch had been subdivided and was being sold as 9 separate parcels. The landowners purchased all the lots reuniting the ranch, extinguished all but one development right, and permanently conserved this land with a conservation easement. A grant from the Salmon Recovery Funding Board paid half the value of the easement and the landowners donated the remaining value. The landowners have continued ranching activities and are stewarding the forest and shoreline for wildlife and salmon.

*Martha Bray of Skagit Land Trust and Perry Welch of Skagit Fisheries Enhancement Group work with Barb & Ger to develop a conservation plan.*





### **Cumberland Creek Conservation Area:**

With help from our partners, the Skagit Watershed Council and the Salmon Recovery Funding Board, the Trust purchased an additional property along Cumberland Creek. Seattle City Light and Washington Department of Natural Resources (DNR) own adjacent properties bringing the total protection on this peninsula to **300 contiguous acres**. This peninsula teems with wildlife of all sorts and is ideal song-bird, amphibian and elk habitat as well as documented Chinook spawning habitat.



### **Hurn Field Elk Viewing:**

The Trust partnered with Washington Department of Fish and Wildlife to install an interpretive elk viewing pull out along highway 20 at Hurn Field. This property, owned by Skagit Land Trust, is one of the best places in Puget Sound to view elk. Partners in this project include; Norman Archibald Charitable Foundation; Rocky Mountain Elk Foundation; Skagit Community Foundation; Bodinot & Skodje, and the U.S. Forest Service.



# The Nature Conservancy & Trust Partnership

## Upper Skagit River Protection



*Cascade River property protection*

### An Example of Successful Collaboration

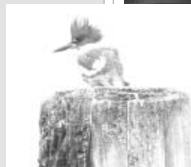
Combining their expertise and resources, Skagit Land Trust and The Nature Conservancy entered into a successful partnership in May 2006 to protect additional salmon habitat in the Upper Skagit River. Utilizing assessments that identified high priority habitat, outreach to landowners was conducted. With grant money from the Salmon Recovery Funding Board and support from the Skagit Watershed Council, 176 acres were purchased along the Skagit, Sauk and Cascade rivers, resulting in 11 1/4 miles of protected shoreline.



*Marc Dubolski*

### Conservation Partners in 2006-07

City of Anacortes  
Coastal Protection Fund  
Conservation Reserve Enhancement Program  
Conservation Futures/Farmland Legacy Program  
Ducks Unlimited  
Farm Service Agency  
Friends of the Anacortes Community Forest Lands  
Leadership Skagit  
Natural Resources Conservation Service  
Pacific Coast Joint Venture  
Rocky Mountain Elk Foundation  
Skagit Fisheries Enhancement Group  
Salmon Recovery Funding Board  
Skagit Systems Co-operative  
Seattle City Light  
Skagit Community Foundation  
Skagit County Marine Resources Commission  
Skagit Conservation District  
Skagit Systems Cooperative  
Skagit Watershed Council  
Skagitonians To Preserve Farmland  
Texaco Trustees Restoration Committee  
The Nature Conservancy  
United States Forest Service – Mt Baker District  
Washington Department of Natural Resources  
Washington Department of Ecology  
Washington Department of Fish & Wildlife



*Cascade River's superb chinook spawning habitat.*

Our work alongside our many partners protecting salmon and wildlife habitat, wetlands and farmland in the Skagit Watershed progresses at a fast clip. We are nearing the permanent protection of a majestic forest in the Skagit Bald Eagle Natural Area. We continue to work in the Nookachamps where farms, wetlands and wildlife habitat are under severe conversion pressure. In the marine environment, we are helping landowners to permanently protect sensitive properties on Cypress,



*Trust property tour.*



*Looking east from Guemes Island to Samish Island, Blanchard Mountain and Mount Baker.*

Guemes, Fidalgo and Samish Islands. On several of our own properties, we are enabling low-impact access thus encouraging support for conservation. A challenge we are beginning to tackle with others is protecting the forest base in Skagit County. Washington's forests are being converted to other uses at a rate that exceeds population growth. Forest lands account for 29% of Skagit County's total land area and thus their fragmentation or loss would severely and negatively impact the entire Skagit environment. We are grateful to our members and supporters for helping us tackle these and other threats to our natural heritage through innovative, voluntary and permanent land conservation methods.

## COMPARATIVE FINANCIAL STATEMENTS FOR THE YEARS 2006- 2007 ENDING MARCH 31

### Abbreviated Statements of Financial Position as of March 31

	2007	2006
<b>Assets</b>		
Cash and short-term investments	\$ 115,717	206,303
Pledges, receivables, other	71,879	55,113
Investments (for land & stewardship projects)	1,127,723	962,880
Conservation Land	2,543,616	2,335,689
<b>Total Assets</b>	<b>\$ 3,858,935</b>	<b>3,559,985</b>
<b>Liabilities</b>	<b>\$ 18,766</b>	<b>27,895</b>
<b>Net Assets</b>	<b>3,840,169</b>	<b>3,532,090</b>
<b>Total Liabilities and Net Assets</b>	<b>\$ 3,858,935</b>	<b>3,559,985</b>

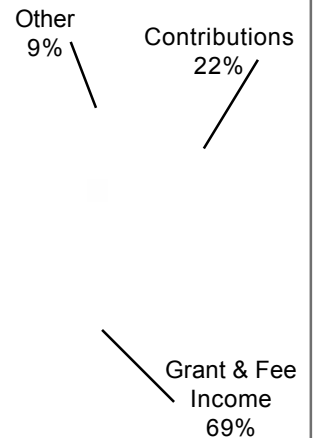
### Abbreviated Summary of Activities – Cash

For the years ending March 31

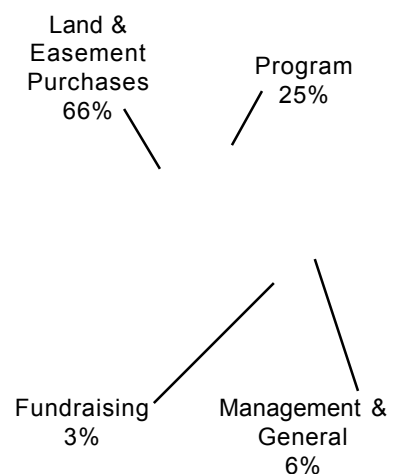
	2007	2006
<b>Support and Revenue</b>		
Contributions (cash and in-kind)	\$ 187,584	113,429
Grant and fee income	585,478	638,999
Investment Income & interest	74,134	30,876
Net gain/ (loss) on land & equipment sales	(2,816)	0
<b>Restricted contributions for land &amp; stewardship</b>	<b>298,190</b>	<b>317,653</b>
<b>Total Support and Revenue</b>	<b>\$ 1,142,570</b>	<b>1,100,957</b>
<b>Expenses and Acquisitions</b>		
Land and stewardship programs	262,884	196,273
Administration and fundraising	98,842	75,037
<b>Subtotal</b>	<b>361,726</b>	<b>271,310</b>
Conservation easement acquisition	472,765	0
Land & equipment acquisitions	222,919	586,642
<b>Total Expenses and Acquisitions</b>	<b>\$ 1,057,410</b>	<b>857,952</b>
<b>Net Result</b>	<b>\$ 85,160</b>	<b>243,005</b>

### Revenue & Expenses 2006-07 for year ending March 31st

#### Revenue - 2007



#### Expenses - 2007



### Financial Notes

Skagit Land Trust completed the following land transactions and financial contracts.

1. The Trust conserved 119 acres through a conservation easement at Elysum Meadows. A Salmon Recovery Funding Board grant helped to purchase half the conservation easement for \$223,986. The landowners donated the other half of the value of the conservation easement.
2. The Trust was hired by the Nature Conservancy of Washington to help secure three properties in the Upper Skagit River. The Trust was paid a fee for service for this work.
3. The Trust purchased 25 acres of Skagit River shoreline and forest at Cumberland Creek with grant funding of \$174,384 from the Salmon Recovery Funding Board matched with Trust funds of \$30,774 (total project costs).
4. The Trust secured 82 acres of tidelands in Fidalgo Bay with Texaco Mitigation Funds and transferred these at closing to the Department of Natural Resources encumbered by a conservation easement held by Skagit Land Trust. The Trust was paid a fee for service for this project.
5. The Trust purchased 13 acres at Mud Lake for \$26,000.
6. The Trust added 265 additional acres of conservation easements on the Anacortes Community Forest Lands. \$5300 was donated to the stewardship reserve fund to ensure longterm monitoring and defense of these acres.

These abbreviated financial statements for 2007 are derived from the independent auditor's report submitted to the board of trustees by Larson Gross p.l.l.c.. In the auditor's opinion they "present fairly in all material respects, the financial position of Skagit Land Trust as of March 31, 2007"

# Skagit Land Trust Members

## Tributes

April 1, 2006 – March 31, 2007

*Your memorial and honorary gifts to Skagit Land Trust create a lasting tribute to friends and loved ones by helping to protect the beauty, character and diversity of the Skagit landscape for current and future generations.*

## In Memory of

### **Albert Heath**

Clayton & Barbara James

### **Polly Winkelman**

Brenda Cunningham & Tim Manns  
Sara McKenzie  
Jan & Keith Wiggers  
Andrea Xaver

### **Laurence Sibring 1913-1992**

Anna Sebring

### **Nathan Rawhouser**

Employees of North Cascades Nat'l Park  
Service Complex  
Friends, Family & Teachers of Nathan  
Ruth & Ward Rawhouser  
Erynn E. M. Stephan

### **Lois & Ben Englebright**

Tamara Stevens & Todd Rubano  
Annette Woolsey & Jim Shiflett

## In Honor of

### **Darren Kavanagh & Krisina Miller**

Susan & Tom Colligan

### **John H. Munn**

Judi Munn

### **John & Linda Hunt**

Al Varness

## Corporate Members

### **Business Benefactor**

(\$1000-\$2400)

Skagit State Bank

### **Business Benefactor**

(\$500-\$999)

First American Title  
MacGregor Publishing Co.  
Lee Mann Photography

### **Business Patron (\$250-\$499)**

Academic Adventures  
AnacortesHomes.com  
Landed Gentry Development  
Leonard, Boudinot & Skodje, Inc  
Miller Consulting  
Puget Sound Energy  
Shell Puget Sound Refinery  
Shorebird Properties  
Skagit River Steel & Recycling, Inc.

### **Business Sponsor (\$100-\$249)**

Arbor Pacific Forestry Services, Inc  
Christianson Nursery, LTD  
Cline Consulting, LLC  
Concrete Nor'West  
Graham-Bunting & Associates  
Hoekstra & Hoekstra  
The Language Exchange, Inc.  
McGregor Insurance Agency, Inc.  
Skagit Valley Healing Arts  
Skagit Wild Bird Supply  
Wildlands of Washington, Inc.

### **Business Supporter (\$60-\$99)**

Fran Little LLC  
Meyer Sign & Advertising Co.  
Perennial Pleasures  
Sauk Mountain Pottery

### **Business In-Kind Support**

Academic Adventures  
Art by Thais  
Big Lake Trees  
Cafe Burlington  
Childhood Bliss  
Christianson Nursery, LTD  
Cline Consulting, LLC  
Deli Llama Wilderness Adventures  
GreenTree Consulting  
Gretchen's  
Hedlin Farms  
Jean's Plant Farm  
La Conner Flats  
Lee Mann Photography  
Leonard, Boudinot & Skodje, Inc  
Lowe's Hardware  
Mike & Jean's Berry Farm  
Native Springs  
Nell Thorn Restaurant  
Rumours Hair Design  
Sakuma Brothers Farm  
Sauk Mountain Pottery  
Scott's Bookstore  
Semrau Engineering & Surveying  
Skagit Opera  
Skagit Valley Gardens  
Sound Ecological Endeavors

Stratum Group  
Studio 29  
Summersun Nursery & Landscaping  
Sunbreak Greetings  
Taylor Shellfish Farms  
The Dulce Plate  
The Wild Iris  
Well's Nursery  
Wilson Picture Framing

### **Organizations**

Evergreen Islands  
Fidalgo Fly Fishers  
Friends of Anacortes Community Forest Lands  
Friends of Skagit County  
La Conner Quilt Museum  
Lincoln Theatre  
Center Foundation  
Museum of Northwest Art  
North Cascades Institute  
Skagit Audubon Society  
Skagit Conservation District  
Skagitonians to Preserve Farmland  
Skagit Opera  
Theatre Arts Guild

### **Grants & Foundations**

The Burning Foundation  
The Hugh & Jane Ferguson Foundation  
Linnemann Family Foundation  
The Norcross Wildlife Foundation  
PACCAR Inc & PACCAR Technology Center  
Rocky Mountain Elk Foundation  
Salmon Recovery Funding Board  
The Seattle Foundation  
*Cornfield Family Fund*  
Skagit Community Foundation  
*Clarence Stewart Fund*  
Temcov Foundation  
Tulalip Tribes  
WA Dept Fish & Wildlife- ALEA

## Stewardship Fund

City of Anacortes  
Ralph & Ruth Heft

## Matching Funds

Boeing Gift Matching Program  
Cingular  
Microsoft Giving Campaign  
Puget Sound Energy  
SAFECO

## Trust Builders

### **Major Donors (\$5000 and up)**

John and Linda Hunt  
Clayton and Barbara James  
Beau MacGregor  
Barbara Trask & Ger Jan van den Engh  
John Tursi



# Skagit Land Trust Members

## Conservator (\$1000-\$2499)

Anonymous  
Anonymous  
Anonymous  
Robert L. Apter, MD  
John & June Brada  
Harold & Shirley Christenson  
Bob & Ann Dursch  
Ron Feld & Lorna Klemanski  
Corwin Fergus  
Robert & Elizabeth Fergus Fdn.  
Jay Ham & Jan Hersey  
Rusty Kuntze & Libby Mills  
Susan Hayton Magorien &  
Scott Magorien  
Janice Martin & Doug Robinson  
Sue & George Mehler  
James & Marlene Moore  
Janice Martin & Doug Robinson  
Deborah North & Robert Coffey  
Erynn E.M. Stephan  
Dederick Ward & Susan Parke  
Keith & Jan Wiggers  
Ken & Anne Winkes  
Ben & Sloane Winkes  
Robert & Kay Wuerth  
Andrea Xaver  
Margaret Yeoman  
Stan Zyskowski

## Sustaining Members

### Benefactor (\$500-\$999)

Mary Kay Barbieri & Linda Jordan  
Lloyd & Wendy Brown  
Jane Clapp  
Brenda Cunningham & Tim Manns  
Nick Fahey & Deborah Martin  
Ralph & Ruth Heft  
Marcia Hunt  
Sean Kelly  
Gene & Ginny Murphy  
Kenneth & Enid Oates  
Bob & Barb Rock  
Linda Speck & Ken Willis  
Tamara Stevens & Todd Rubano  
Richard & Sharon Stewart  
Kate Stewart & Deborah DeWolfe  
Annette Woolsey & Jim Shiflett

### Patron (\$250-\$499)

Anonymous  
Ruth and Harry Adamitz  
Howard & Thais Armstrong  
Richard & Margaret Baldwin  
Diane Bednarz & Peter Jepson  
Kathryn Bennett  
Glenn & Teddie Bordner  
Bob & Nina Boudinot  
Martha Bray & John Day  
Don Brown  
Bob Carey & Kari Odden  
Ivar & Phyllis Dolph  
Molly Doran, Andrew Cline  
Jerry & Marilyn Eisner  
Carol & Jon Engels  
Jim & Frances Ford  
Carolyn & Ed Gastellum  
Kristine & Roger Goodan

Phil & Kathy Green  
Jerry & Sheila Haegele  
David & Deborah Hall  
Sonia & James Harvey  
Larry & Josie Hedgpeth  
Bill & Susan Henry  
Mark & Alison Hitchcock  
Jean & Brad Imus  
Steve & Robyn Johnson  
Patricia Karlberg & Robert Keller  
Wendy & Hugh Kendrick  
Robert Knowles  
Dick & Doris Kohler  
Rae Kozloff  
Patsy Botsford-Martin &  
Daniel Martin  
William & Diana McGaw  
Cynthia McGuinness  
Malcolm & Michelle McPhee  
Susan & Fred F. Miller  
John & Marge Milnor  
H. Donald Parry &  
Vicki Soderberg Parry  
Fred & Irmgard Poppe  
Denny & Laurie Quirk  
Carl & Jane Randolph  
Lavonne & Dick Reim  
Tom Robbins  
Betty Rockwell  
Kathleen H. Root  
Jim & Levy Scheltens  
David & Eddylee Scott  
Pat Sneeringer  
Dennis Stanchfield &  
Susan Radkins  
Kate Szurek  
Dennis & Mary Ann Taylor  
Tim & Alice Volwiler  
Don Wick  
Sara Young & Wade Melton

### Sponsor (\$100-\$249)

Astrid Aamot  
Evelyn Adams  
David Adams & Greta Movassaghi  
Debbie Aldrich  
Frances Ambrose & Steve Hunter  
James Asa  
Bruce Ault  
Bob and Pat Bell  
Ken Berg & Jan Weydemeyer  
Richard Bergner  
Sarah Bishop & John Mailhiot  
Ric & Janet Boge  
Robert & Victoria Bourns  
John & Mary Louise Brown  
Joost Businger &  
Marianne Kooiman  
Cathy Carmody &  
David Deffenbaugh  
John A. Carr, MD  
Joan Casey  
Tom, Beth & Christine Cleland  
Landry & Susan Corkery  
Debbie & Darrell Cornelius  
Tom & Barbara Corrigan  
Patricia A. Cowgill  
Lee & Mary Sue Dallas

Larry & Lorry D'Arienzo  
Donna Davidson  
Anne Barbrey Davis  
Homer & Rosette Dawson  
Gene & Marilyn Derig  
Woody Deryckx  
Paul Dinnel & Vicki McNeil  
James Eberhardt  
Harold & Diane Eiesland  
Walter Enquist  
Doug & Cheryl Everhart  
Donald J. Finsen  
Joseph & Lucrezia Fuchs  
Brad Furlong & Eileen Butler  
James Gallup  
Warren & Marilyn Gilbert  
Herb & Theresa Goldston  
Anita Meyer & Josh Greenberg  
Peter & Dorothy Haase  
Shirley Haley  
Daniel & Marilyn Hanesworth  
Karen A. Lewis-Hart & Derek Hart  
Lief & Monica Hazelet  
Jean & William Heflin  
Robert MD, & Judith Higgins  
Doris Holmes  
Bill & Ruth Hood  
Nancy Husted  
George Jay  
Ryan & Christina Jepperson  
James Johnson & Marilyn Kenney  
Stephen & Nancy Johnson  
Fayette Krause  
Von & Elizabeth Kuehn  
Trevor & Carol Kyle  
Robin LaRue  
George Lawson  
Miles Learned  
Carolyn Sutton & Cort Liddell  
Mr. & Mrs. Gordon Lisser  
Meredith & Rick Machin  
Ann Magnano  
Dr. Jennifer McCoy  
Todd McNett & Liz Crowl-McNett  
Robert & Barbara Meier  
Scott Mennella & Anne Sidbury  
John Merrell II  
Gary & Betty Miles  
James & Gene Mizell  
Tom & Mary Moody  
David & Eileen Moreland  
Diane Morton & Wendy Cobb  
Judi Munn  
Dick & Joyce Nelson  
Edward K. Newbold  
John & Shirley Osborn  
Simon Ottenberg  
James Owens  
Lorna & Dennis Parent  
Robert G. Personius  
Daniel Posel  
Margaret E Potter  
Ed & Linda Pysher  
Bruce & Kathy Raine  
Richard & Karen Raisler  
Peggy Ratermann  
Don Reese  
Scott & Martha Rhodes

Lauren Rich  
Suzette Richards  
Gary A. Richardson  
Terence & Mary Rios  
Richard & Nancy Robblee  
John & Patricia Rose  
Eric & Jenny Sandbo  
Herb & Christine Sargo  
Charles Schultz &  
Terri Bakke-Schultz  
Maurice & Virginia Shank  
Rudy & Debbie Skonord  
Marlies & John Slostad  
Terence & Lois Slotemaker  
Gail R. Smith  
Harriet Spanel  
Charles Stavig  
Terry & Kathy Stevens  
Larry & Alba Stevens  
Richard & Daphene Storwick  
Margaret Studer  
Mary & Bob Taylor  
Bill & Sally Turner  
Gary & Ruby Vallat  
Jonnie Vance  
James Van Horn & Darlene Franz  
Al Varness  
Lee & Ann Vincent  
Ginny & Ray Wolff  
Todd Wood & Judy Gamble  
Ms. G. O. Wright  
Sylvia Wynn  
Danielle Young  
Jane Zillig & Paul Ingalls

## Contributing Members

### Supporter (\$60-\$99)

Dick Anderson & Lynn Reed  
Jim & Joyce Anderson  
Anonymous  
Mark & Ruth Backlund  
Judy Baker  
Rick & Laura Bethke  
Rich & Feryll Blanc  
Gary & Heidi Bletsch  
Daniel F. Casey &  
Sally Weakley Casey  
Jennifer F. Clarke, Ph.D  
Joan Cross  
Fred & Virginia Darvill  
Pat & Dick de La Chapelle  
Joyce & Cecil Dillard  
David Edenfield  
Tom & Stacy Fawell  
John Freeman  
Barbara French  
Mary Froderberg  
Karen Gardiner & Philip Brown  
Hellmut & Marcy Golde  
Dan Gould  
Robert Green  
Ernie & Joan Handelsmann  
Mary Hardt & Scott Andrews  
Robert & Bev Helton  
Helen Heneks  
David & Kathy Hirdler  
Margi Houghton  
Loren Huggins & Marie Lord

We are grateful to the members listed below whose donations  
were received between April 1, 2006 and March 31, 2007

Eileen Kirkpatrick & Noel Howes  
Beth Kraig & Suzanne Klinger  
Eric & Laura Kraig  
Bojan Kuure  
Jere LaFollette &  
Wende Sanderson  
Candace L. Lower  
Dr. Malcolm Madenwald &  
Wendy Gray  
William & Laurel Malcomson  
Ingrid & Bruce McBane  
Ric & Diane Merry  
Maggie Miller & Larry Stiles  
W.M. Mohundro  
Jeff & Anna Montgomery  
Paula Ogden-Muse & Jeff Muse  
Kirk Johnson & Lori Nordgulen  
Gordon & Joanne Odegaard  
Mike & Bonnie Olpin  
Kathleen Walsh Packard  
Steve & Sandi Randle  
Clarence & Virginia Rankin  
Kathy & Robert Reim  
Peter Remick  
Susan Richardson  
Harold & Irene Richardson  
Jack & Cynthia Richardson  
Kristin Sallis  
Paul Schissler & Sue Willis  
Robert E. Scott  
Anna Sebring  
Howard & Kathy Shapiro  
Sue & Richard Sigmen  
John Smith & Cheryl Harrison  
Bob & Connie Snell  
Steve & Frederica Sulzbacher  
Carol Taylor & Thomas Carson  
Cecil & June Thomas  
Bill & Laurie Wallace  
David & Carol Welling  
Robert C. Woolley  
Jennifer & William Woyski  
Philip & Carolynne Wright  
David & Pat Young  
Patricia Youngman

**Partners (\$40-\$59)**

Norman Ainslie  
Steve & Gail Aslanian  
Lynnette Trucco-Baier &  
Doug Baier  
Graydon & Joyce Baker  
Liz & Michael Bart  
Barbara Bashaw  
Tom & Helen Bassler  
Al & Sue Berger  
C. A. Biermann  
Hazel Blakeslee  
Julie Blazek  
Paul Blum & Alison Zak  
John & Gail Boggs  
Carol Bohmbach  
Kalman Brauner & Amy Carlson  
Kelly Bush & Russ Dalton  
Ellen Bynum & Stewart Toshach  
Susan & Tom Colligan  
William & Joan Colvin  
Gerry Cook & Hannah Sullivan

Barbara Craner  
Al Craney  
Eunice W. Darvill  
John & Ramona Douglass  
Judith Dudley & Thomas Slocum  
Doreen Dunton  
Ann Eissinger  
John & Marie Erbstoesser  
Alix Foster & Rick Shorten  
David Fredericks &  
Patricia Anderson  
Richard Fritsch  
Evelyn Gibb & Arthur Soloman  
Kay Glade  
Lance Goeke  
Barbara & Dean Gregory  
Helen Hagen  
Anne Hillard  
Steve & Katie Hinton  
Bill Hlavacek &  
Gail Bohnhoff-Hlavacek  
Lauren Jaye & Billie Robinson  
Paul Johnson  
Laura Jones  
Amy & Pierre LaBarge  
Kathy & Mark Larson  
Dan & Patricia Logen  
Gary Lorenz  
Mr. & Mrs. William V. Lucic  
Keith & Joan MaGee  
Donald & Mary Magness  
Kathy & Jim Maher  
Michael Maki  
Clarice R. Martin  
Sara McKenzie  
Janet McKinney  
Jim Nelson  
George & Mary Newbury  
Gail & Richard Nicolls  
Tom Pasma & Sue Sultze  
Loretta Penrod  
Hazel Pilkinton  
Robert Raymond & Dorothy Downes  
Denise & Ronald Runyan  
Shane & Susan Sanderson  
Donna Schram, PhD  
Jo-an & Bill Scott  
Robert & Joan Skeelee  
Shirley Smith  
J. Allen & Marie Smith  
Jay Smith & Susan Wood  
Richard Staples  
Jack Stephens &  
Ellen O'Neill Stephens  
Nancy Swalling  
Bill & Ann Testerman  
Rick & Reinhold Thompson  
Richard & Carol Treston  
Gina Van Hess  
Bob Vaux & Kristen Murphy  
Virginia Walsh  
Elise & Duff Walker  
Barbara Weaver  
Sarah Welch & Jon Riedel  
Stedem Wood  
Rosann Wuebbels & George Reeves  
Laura Wynn & Theo Antikas

**Friend (\$30-\$39)**

Kathryn Alexandra  
Diane Altwein  
Helen Andersen  
Gladys Bailey-Hudec  
Meredith Baker  
Cathy Baker & Rich Feldman  
Jon & Ann Bowman  
Joe Bucek & Mary Heath  
Lois Canright  
Carol Carnahan  
Ann Childs & Stephen Thornton  
Dorris Civile  
Eileen Coan & Ross Mc Conahey  
Barbara Cooper  
Jack & Sonja de Yonge  
Suzanna Dentel  
Barb & Terry Doran  
Robert & C. Alexandra Dunn  
Earthbound Used Books  
Phyllis L. Ennes  
Diane Firestone  
Dianne Gaughan  
Brett Ginther  
Ellen Gray  
Richard Greening  
Louise Harris  
Judith Hartford  
Steve Holsey  
Sarah Huntington  
Steve & Dian Jahn  
Susan Jepson  
Elmer & Jean Johansen  
Janette Johnson  
Thomas V. & Lane Johnson  
June Jordan  
Konrad Kurp  
Jeannie Lennon  
Father Paul Magnano  
Jeff & Ann May  
Renata & Darren Maybruck  
L. Heather McCauley  
Dick & Bettie McNeely  
Duane & Joan Melcher  
Jim Merritt & Margie Martin  
Bob Mierendorf  
Mark & Alison Miller  
Melinda Olswang & Bruce Racine  
Allane Onkst  
Mark Pearson  
Howard & Carol Pellett  
Daniel Penttila  
Elizabeth Perrin  
William & Sally Pfeifer  
Andrea & Lyle Poolman  
Linda Sanford  
Robert & Emma Schroder  
Ron Shrigley  
Howard Shuman  
Laura Smith  
Gale Sterrett  
The Stormont Family  
Carol Strandberg  
Terica Taylor  
Mr. & Mrs. Richard Tjersland  
Greg & Ellen Vlasak  
Patty Wasson & Bob Shelly

Barbara Wells  
Brian & Dyani Wetcher  
June Wheeler  
Jan Wilson  
Linda & Michael Wolfe

**Associates**

Arthur & Maryann Arndt  
Robert & Nancy Bailey  
John & Nancy Barnard  
Dan & Donna Brauer  
Craig E. Cammock  
Harriet Hanson Follman  
Dyvon Havens & David Slabaugh  
Holley Hoag  
Edward & Valerie Jensen  
Sheila Klein & Ries Niemi  
Anne & Bob Kuntz  
Philip & Anne McCracken  
Kris & Carl Molesworth  
Mary S. Paxton  
Ruth Elfstrom Riggles  
Anne Schwartz & Mike Brondi  
Jane E. Stephens  
Natalie & Steve Weatherby  
Forrest & Nancy Louise Wilkinson  
Chester Wood

Additional In Kind

Peggy Alexander  
Meredith Baker  
Glenn & Teddy Bordner  
Bertha Bridge  
Joost Businger & Mariane Kooiman  
Brenda Cunningham  
Molly Doran & Andrew Cline  
Ron Feld & Lorna Klemanski  
Fidalgo Fly Fishers  
David & Deborah Hall  
Sarah Huntington  
Phil Green  
Clayton & Barbara James  
Diane Bednarz & Peter Jepson  
Ryan Jepperson  
Trevor & Carol Kyle  
Janice Martin & Doug Robinson  
Philip & Anne McCracken  
Liz Crowl-McNett & Todd McNett  
Ric Merry  
Marlene & Jim Moore  
Virginia Murphy  
Gail Nicholls  
John Osborn  
Linda Sanford  
John Scurlock  
Dave Shaw  
Skagit Wild & Scenic River Program  
Mt Baker Ranger District  
Linda Speck  
Ryan Walters  
Dederick Ward & Susan Parke  
Laura Wynn & Theo Antikas  
Andrea Xavier  
Sara Young & Wade Melton



PO Box 1017  
325 Pine Street, Suite B  
Mount Vernon, WA 98273  
[www.skagitlandtrust.org](http://www.skagitlandtrust.org)

Non-Profit Org.  
U.S. Postage Paid  
Mount Vernon, WA  
Permit No. 195

## Saving Land for Tomorrow



### Mission Statement

Skagit Land Trust protects wildlife habitat, wetlands, agriculture and forest lands, scenic open space and shorelines throughout the mainland and islands of Skagit County for the benefit of our community and as a legacy for future generations.